

REVEAL™ 35C

FLAT PANEL DETECTOR



WELCOME **INNOVATION**
AND EXPLORE **FURTHER**



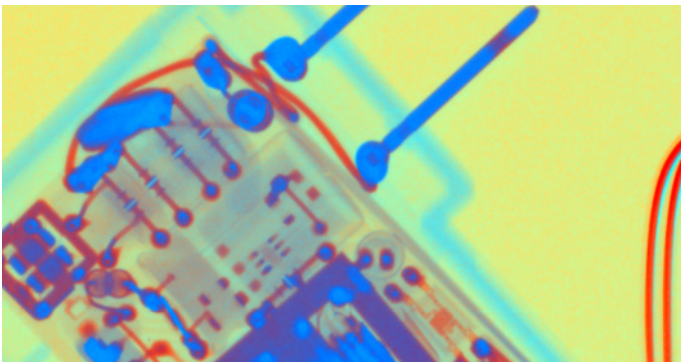
Be ready for the world's first portable dual-energy / multi-energy X-ray detector. KA Imaging's Reveal™ 35C provides better images than the current options on the market, excelling at applications involving metal and plastic separation, hidden defects detection and hidden compartment screening.

EXCLUSIVE TECHNOLOGY
FOR A UNIQUE AND
COST-EFFECTIVE SOLUTION

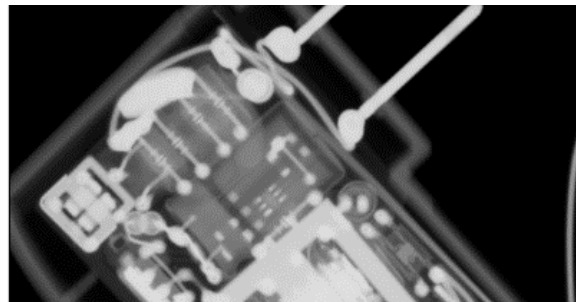
Using a single exposure with a conventional X-ray source, Reveal™ is capable of generating three types of images: traditional DR, low-density and high-density materials. This single exposure eliminates the motion artifact problem observed in traditional dual-energy systems that require two exposures. The detector's unique energy features can be customized simply through software settings to distinguish various types of high and low-density materials.

Reveal™ comes in a standard ISO 4090 35 cm x 43 cm size, which can be retrofitted onto existing systems.

Reveal™ is capable of performing in a multitude of environments. The tethered configuration provides rapid data transfer, and its wireless capabilities deliver flexibility and increased reach. The portability and wireless capabilities of the X-ray device makes it ideal for both fixed and mobile applications.



The above photo displays an image of an AC power adaptor taken by KA Imaging's Reveal™. Notice the material-based colorization.



The above photo is a comparison photo taken with a regular X-ray detector.

TECHNICAL SPECIFICATIONS

System	KA Imaging Reveal 35C Flat Panel Detector
Detector Size	14 x 17 inch/35 x 43 cm (ISO 4090)
Pixel Pitch	140 μ m
Sensor Type	Amorphous Silicon
Scintillator	CsI
Communication	Wireless or gigabit ethernet
Trigger	Lossless AED
Power	Battery and/or tethered AC 100-240 VAC/50-60 Hz
A/D Conversion	16 bits
Cycle Time	Typ. 10 seconds
Preview Time	Typ. 7 seconds
Software	C++ SDK available for system integration
Energy Range	40 ~ 150 keV*

*Higher energy supported on request

System	KA Imaging Reveal 35C Flat Panel Detector		
Dose Efficiency and Resolution	lp/mm	DQE	MTF
	0	75%	N/A
	1	67%	64%
	2	53%	35%
	3	34%	18%
Dose Range	Nyquist	21%	13%
	Saturation Dose	215 μ Gy	
	Maximum Linear Dose	195 μ Gy	
	Noise Equivalent Dose	80 nGy	



Advanced Material Separation



Portable and retrofitable



Wireless capabilities



Single exposure, no motion artifact



Hot swappable battery



Automatic Exposure Detection (AED)

About KA imaging

KA Imaging was founded in 2015 as a University of Waterloo spin-off. The company has successfully developed a line of innovative x-ray imaging products in the areas of micro-computed tomography, high efficiency x-ray area detection and multi-energy spectral separation detection. KA is proud to strive to understand the needs of its customers, ensuring to stay ahead of the innovation curve.

KA Imaging Inc.
3-560 Parkside Dr
Waterloo, ON
T: 1-226-215-9897
www.kaimaging.com

Sales and Product Information
sales@kaimaging.com

Customer Support
support@kaimaging.com

Investor Information
investor@kaimaging.com

Media Inquiries
media@kaimaging.com

