

REVEAL™ 35C

FLAT PANEL DETECTOR



INNOVATIVE TECHNOLOGIES FOR OPTIMIZED VETERINARY PRACTICES



Be ready for the world's first portable multi-energy X-ray detector. With a single exposure, Reveal™ 35C delivers multiple diagnostic images, differentiating bone and soft tissue without motion artifacts. Using KA Imaging's patented technology, this detector goes beyond traditional Dual-Energy systems that require two exposures. The advanced differentiation of bone and tissue in diagnostic imaging allows for better visualization of cartilage calcification and tiny kidney stones, among other applications. At the same time, Reveal™ 35C maintains low radiation exposure to the veterinary radiologist and the animal being imaged.

THE **FUTURE** IS NOW – AND **COST-EFFECTIVE**

Reveal™ is designed to obtain a Multi-Energy X-ray image from a single exposure using a conventional X-ray source. The patented technology features a portable and retrofittable design, capable of simultaneously capturing Multi-Energy images and very high DQE digital radiography (DR) images.



Equines and small animals imaging



Bone and soft tissue differentiation



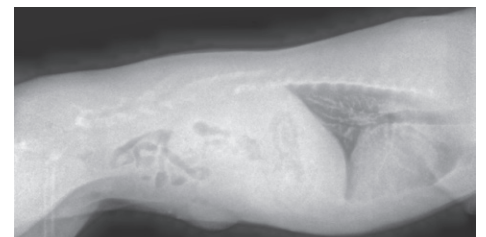
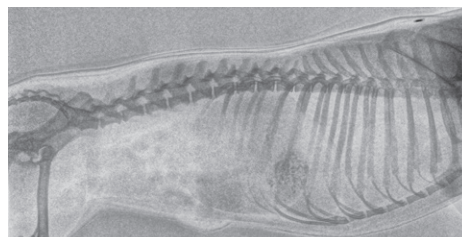
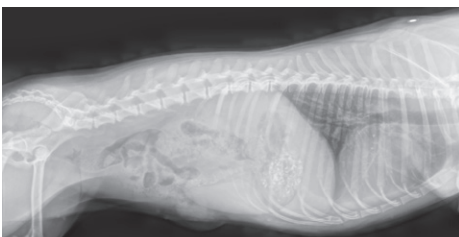
Single exposure, no motion artifact



Retrofittable



Fixed and mobile applications



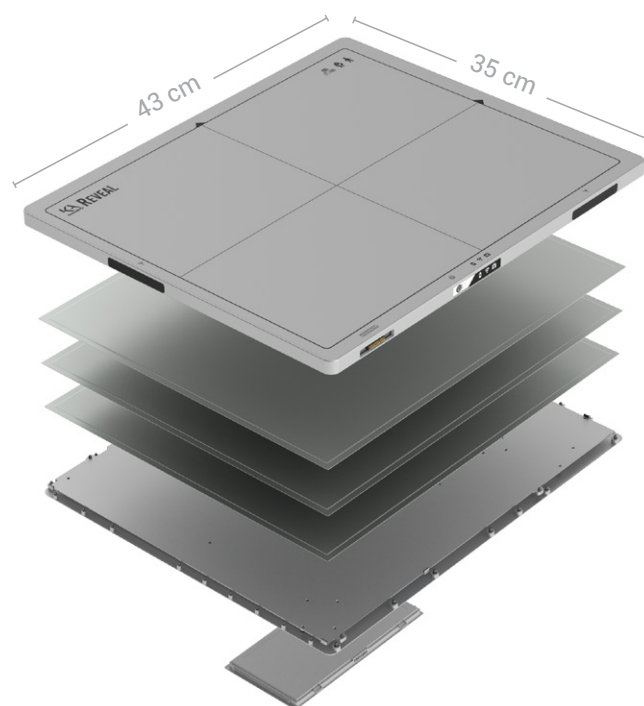
Lateral view of a dog abdomen imaged with KA Imaging's Reveal™ 35C.
From left to right: traditional DR, bone and soft tissue.

TECHNICAL SPECIFICATIONS

System	KA Imaging Reveal 35C Flat Panel Detector
Detector Size	14 x 17 inch/35 x 43 cm (ISO 4090)
Pixel Pitch	140 µm
Sensor Type	Amorphous Silicon
Scintillator	CsI
Communication	Wireless or gigabit ethernet
Trigger	Lossless AED
Power	Battery and/or tethered AC 100-240 VAC/50-60 Hz
A/D Conversion	16 bits
Cycle Time	Typ. 10 seconds
Preview Time	Typ. 7 seconds
Software	C++ SDK available for system integration
Energy Range	40 ~ 150 keV*

*Higher energy supported on request

System	KA Imaging Reveal 35C Flat Panel Detector		
Dose Efficiency and Resolution	lp/mm	DQE	MTF
	0	75%	N/A
	1	67%	64%
	2	53%	35%
	3	34%	18%
	Nyquist	21%	13%
Dose Range	Saturation Dose	215 µGy	
	Maximum Linear Dose	195 µGy	
	Noise Equivalent Dose	80 nGy	



About KA imaging

KA Imaging was founded in 2015 as a University of Waterloo spin-off. The company has successfully developed a line of innovative x-ray imaging products in the areas of micro-computed tomography, high efficiency x-ray area detection and multi-energy spectral separation detection. KA is proud to strive to understand the needs of its customers, ensuring to stay ahead of the innovation curve.

KA Imaging Inc.
3-560 Parkside Dr
Waterloo, ON
T: 1-226-215-9897
www.kaimaging.com

Sales and Product Information
sales@kaimaging.com

Customer Support
support@kaimaging.com

Investor Information
investor@kaimaging.com

Media Inquiries
media@kaimaging.com



Reveal 35C Vet 2021.1