

# REVEAL™ 35C

FLAT PANEL DETECTOR



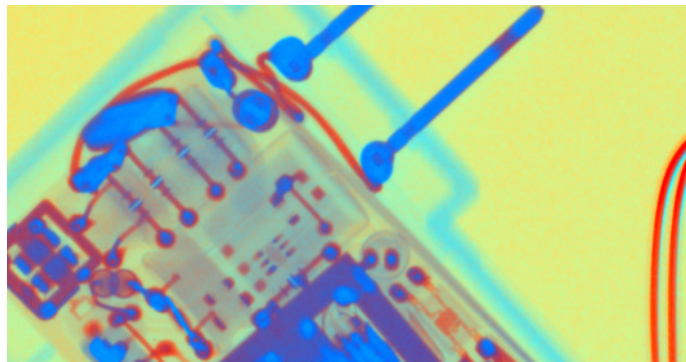
WELCOME **INNOVATION**  
AND EXPLORE **FURTHER**



Be ready for the world's first portable dual-energy / multi-energy X-ray detector. KA Imaging's Reveal™ 35C provides better images than the current options on the market, excelling at applications involving metal and plastic separation, hidden defects detection and hidden compartment screening.

**EXCLUSIVE TECHNOLOGY**  
**FOR A UNIQUE AND**  
**COST-EFFECTIVE SOLUTION**

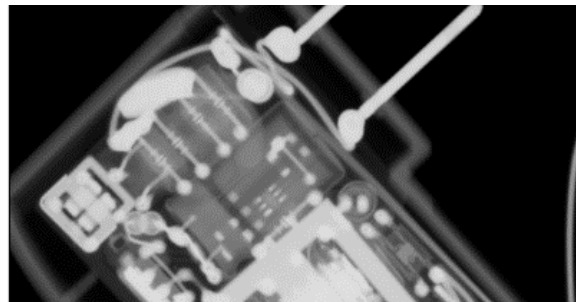
Using a single exposure with a conventional X-ray source, Reveal™ is capable of generating three types of images: traditional DR, low-density and high-density materials. This single exposure eliminates the motion artifact problem observed in traditional dual-energy systems that require two exposures. The detector's unique energy features can be customized simply through software settings to distinguish various types of high and low-density materials.



The above photo displays an image of an AC power adaptor taken by KA Imaging's Reveal™. Notice the material-based colorization.

Reveal™ comes in a standard ISO 4090 35 cm x 43 cm size, which can be retrofitted onto existing systems.

Reveal™ is capable of performing in a multitude of environments. The tethered configuration provides rapid data transfer, and its wireless capabilities deliver flexibility and increased reach. The portability and wireless capabilities of the X-ray device makes it ideal for both fixed and mobile applications.



The above photo is a comparison photo taken with a regular X-ray detector.

# TECHNICAL SPECIFICATIONS

System	KA Imaging Reveal 35C Flat Panel Detector
Detector Size	14 x 17 inch/35 x 43 cm (ISO 4090)
Pixel Pitch	140 µm
Sensor Type	Amorphous Silicon
Scintillator	CsI
Communication	Wireless or gigabit ethernet
Trigger	Lossless AED
Power	Battery and/or tethered AC 100-240 VAC/50-60 Hz
A/D Conversion	16 bits
Cycle Time	Typ. 20 seconds
Preview Time	Typ. 7 seconds
Software	SDK available for system integration
Energy Range	40 ~ 150 keV*

System	KA Imaging Reveal 35C Flat Panel Detector		
Dose Efficiency and Resolution**	lp/mm	DQE	MTF
	0	75%	N/A
	1	67%	64%
	2	53%	35%
	3	34%	18%
Dose Range**	Nyquist	21%	13%
	Saturation Dose	140 µGy	
	Maximum Linear Dose	120 µGy	
	Noise Equivalent Dose	80 nGy	



**Advanced Material Separation**



**Portable and retrofitable**



**Wireless capabilities**



**Single exposure, no motion artifact**



**Hot swappable battery**



**Automatic Exposure Detection (AED)**

\*Higher energy supported on request

\*\*Measured at RQA5

## About KA imaging

KA Imaging was founded in 2015 as a University of Waterloo spin-off. The company has successfully developed a line of innovative x-ray imaging products in the areas of micro-computed tomography, high efficiency x-ray area detection and multi-energy spectral separation detection. KA is proud to strive to understand the needs of its customers, ensuring to stay ahead of the innovation curve.

### Manufacturer:

KA Imaging Inc.  
3-560 Parkside Dr  
Waterloo, ON  
T: 1-226-215-9897  
www.kaimaging.com



### QualRep Services B.V.

Utrechtseweg 310 - Bldg B42, NL-6812 AR Arnhem, The Netherlands



### Sales and Product Information

sales@kaimaging.com

### Customer Support

support@kaimaging.com

### Investor Information

investor@kaimaging.com

### Media Inquiries

media@kaimaging.com

