

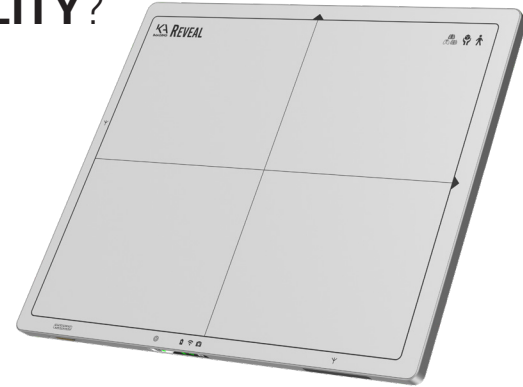
REVEAL PORTABLE PACKAGE

35C - SEDECAL



PORTABILITY OR IMAGE QUALITY? YOU CAN HAVE **BOTH**.

The Reveal Portable Package 35C-Sedecal is an Analog Portable X-Ray Unit with Detector Retrofit. It combines the light weight of the Dragon X SPSL-HF-4.0 portable source with the exclusive single exposure dual-energy capabilities of KA Imaging's Reveal 35C, powered by *SpectralDR*® technology. The package includes the Dragon portable source, the Reveal 35C detector with accessories and a laptop.



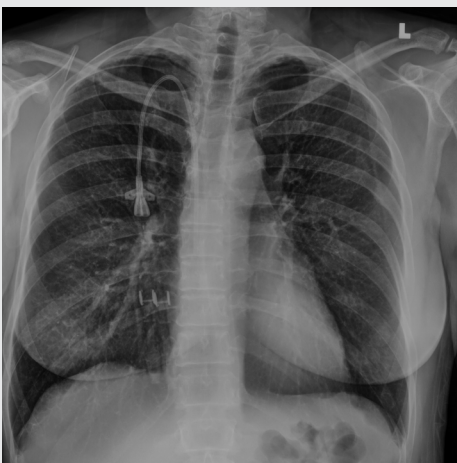
- ✓ Powered by *SpectralDR* technology
- ✓ 1 exposure, 3 images, 0 motion artifacts
- ✓ Lightweight: **54kg**
- ✓ 4 kW generator

SPECTRALDR: 3 IMAGES, 1 EXPOSURE, INCREASED DIAGNOSTIC INFORMATION WITH THE SAME WORKFLOW

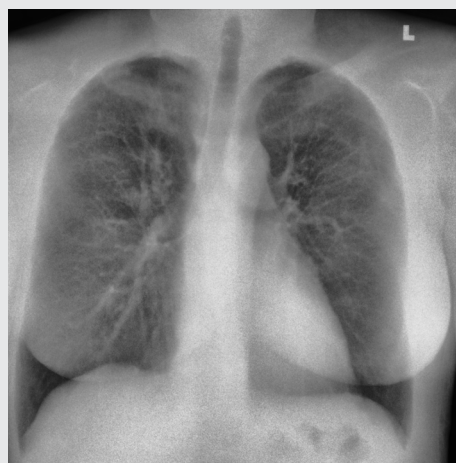
KA Imaging's *SpectralDR*™ technology enables dual-energy subtraction, providing bone and tissue differentiation with a single standard X-ray exposure. It acquires three images simultaneously (DR, bone and

soft tissue dual-energy X-ray images). The technology, which is inside the Reveal 35C detector, mimics the workflow, dose and techniques of state-of-the-art mobile DR X-ray. Dual-energy images are clinically proven¹

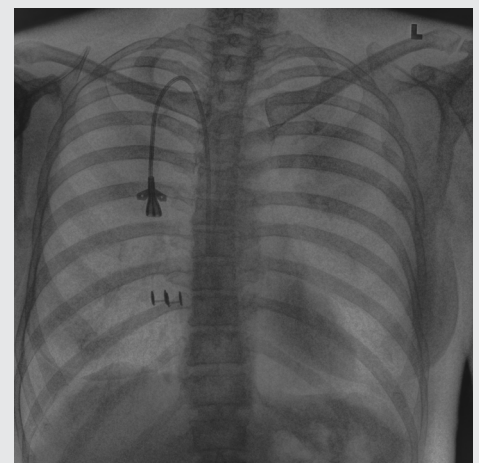
to enhance the visualization of lung nodules, pneumonia, line and tube tips, pneumothorax, retained surgical objects and more.



TRADITIONAL DR IMAGE



SOFT TISSUE IMAGE



BONE IMAGE

TECHNICAL SPECIFICATIONS*

Dragon X SPSL-HF-4.0

System	Dragon X SPSL-hF-4.0
kW rating	4.0
kVp Range in 1 kVp steps accuracy	40 to 125 +/-5%
High Frequency Ripple	300 kHz
mA Stations	5, 6.4, 8, 10, 12.5, 16, 20, 25, 32, 40, 50, 64, 80, 100
Exposure Time Range Number of Stations	0.001 - 10 seconds 41 (in 25% steps)
mAs Range Number of Stations accuracy	0.1 - 250 mAs 34 (in 25% steps) 5%
X-ray tube	
Stationary Anode Two focal Spots Anode Heat Storage capacity Target angle	0.5mm - 1.8mm 47,215 HU 16°
Laser light collimator	optional
Power Cord Exposure cord	19.7 ft (6 meters) 9.8 ft (3 meters)
Line regulation	Single-Phase Line Automatic Regulation Automatic Output Power Adaptation to Power Line Conditions
Line Power Requirements +/- 10% VAC (50/60 Hz)	4kW - 110 VAC to 240 VAC
Weight	118 lbs (54 kg)
Dimensions width height (closed) height (open) length (closed) length (arm 90°)	26" (660.4 mm) 55.2" (1402.1 mm) up to 89" (2260.6 mm) 43" (1902.2 mm) 64.9" (1648.5 mm)

Reveal 35C*

System	KA Imaging Reveal 35C Flat Panel Detector		
Detector Size	14 x 17 x 0.6 in. (383.5 x 459.5 x 15 mm) ISO 4090		
Weight	8 lbs. (3.6 kg) including battery		
Pixel Pitch	140 µm		
Sensor Type	Amorphous Silicon		
Scintillator	CsI		
Communication	Wired: Gigabit Ethernet (1000BASE-T) Wireless: IEEE802.11 ac/n		
Trigger	Lossless AED		
Power	Battery (hot swapable) and/or tethered AC 100-240 VAC/50-60 Hz		
Energy Range	40 ~ 150 keV		
A/D Conversion	16 bits		
Cycle Time	Typ. 20 seconds		
Preview Time	Typ. 7 seconds		
Dose Efficiency and Resolution**	lp/mm	DQE	MTF
	0	75%	N/A
	1	67%	64%
	2	53%	35%
	3	34%	18%
Dose Range**	Nyquist	21%	13%
	Saturation Dose	140 µGy	
	Maximum Linear Dose	120 µGy	

*Technical specifications subject to change without notice.

**Measured at RQA5



6 region APR Console (touchscreen) and 1 region APR Console (membrane) options available.

Reveal 35C Manufacturer:

KA Imaging Inc.
3-560 Parkside Dr
Waterloo, ON
Telephone: 1-226-215-9897



Dragon X Manufacturer:

Sedecal
Poligono Industrial Rio de Janeiro,
C/ Pelaya 9-13, 28110 Algete,
Madrid, Spain



Sales and Product Information

sales@kaimaging.com

